

Discrete Series

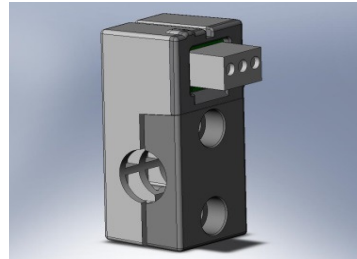
Cambria Discrete Series Sensors use patented and proprietary technology to detect objects passing through a beam. The technology allows detection of fast moving opaque, translucent or transparent objects. Made of a custom engineered plastic with integral lens, this reliable sensor line features long range, narrow beam optical transmission, a rugged, effective clamping mechanism, very fast reaction and recovery times (~10ms). A particularly effective feature is the dual bright red LEDs that can be used to align the sensor and, once aligned, indicate a clear or blocked condition.

Applications

- Postal Sorting Machines
- Automation
- Intrusion
- Conveyor Systems

Benefits

- Easy to install/use
- Strong double clamp with inserts
- Cage-clamp connections
- On-board bright LED indicates power on, alignment, and clear/blocked condition
- Easy alignment
- Narrow transmission beam allows tight placement
- Low power
- Strong, clean, output
- Durable--over one billion actuations with a single sensor!



Preliminary Specifications

Type:	Through beam IR optical sensor
Technology:	Proprietary integral lens design
Operable sensor temp range:	(-40)°C to 60°C
Cable Temperature:	(-40)°C to 85°C
Sensor output:	0.5-5V Full data set streaming or at command
Sensor diagnostics output:	0-3.6V Sensor can be set to Full Interrogation, or data on demand
Guaranteed service lifetime:	30 Million cycles, 1 year
Repeatability:	0.0001%
Hysteresis:	0.01%
Dimensions:	9.5" length, 1.5" diameter
Connector:	3 wire cage clamp
Response Time:	.01ms intrinsic
Case:	Custom Lexan formulation
Approvals:	custom